

TOSHIBA SINGAPORE PTE LTD

COMPUTER SYSTEMS DIVISION

438B Alexandra Road #06-01, Alexandra Technopark, Singapore 119968

Tel: (65) 62709989 Fax: (65) 62751086

pc.toshiba-asia.com

02 April 2004

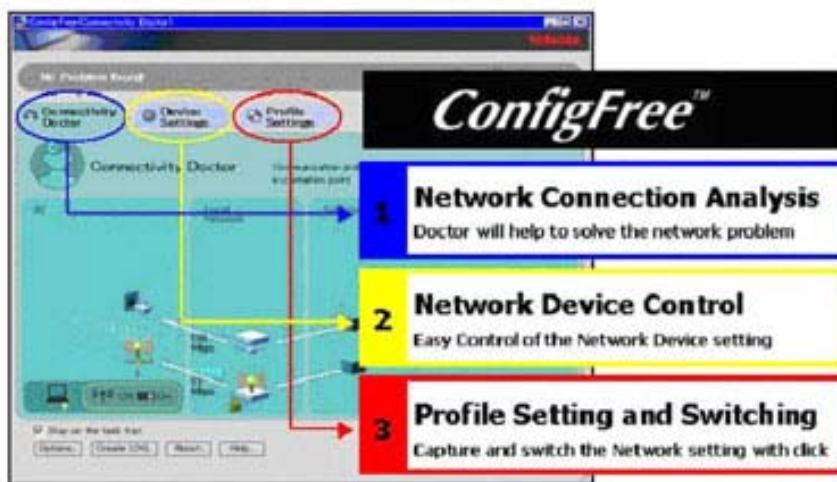
PC Bulletin PC/317/2004

Toshiba ConfigFree™ Connectivity Suite for Wireless Communications

Mobile computing and wireless networking are on the rise. Increasingly, users on the move need to be able to switch easily amongst various kinds of wired and wireless connections and configurations, for fast, simple connectivity in any environment.

Until now, wireless users have often had to work hard to manage their connections, modifying profiles at various locations or manually configuring and switching network adapter settings when switching from wired Ethernet to wireless networking communications.

However, with the introduction of Toshiba's ConfigFree™, mobile and wireless communications are now simple to manage, enabling Toshiba notebook users to easily switch profiles and devices as needed. Anywhere, anytime communications have never been so easy.



Configfree Wireless Connectivity Suite: three main components.

Disclaimer

Toshiba Singapore Pte Ltd makes no representations or claims, either expressed or implied, with respect to this PC Bulletin. Toshiba reserves the right to make changes in the specifications at any time without notice and without obligation of Toshiba Singapore Pte Ltd to notify any person of such changes. All information, statements, technical information, and recommendations in this bulletin are believed reliable, but the final accuracy of material is not guaranteed.

WHAT IS CONFIGFREE™?

ConfigFree™ is a software suite, designed to simplify wired and wireless connectivity for the mobile user by allowing easy control of communications devices and network connections. Moreover, it also includes additional security and connectivity utilities, offering users productivity a single graphical interface for managing networking communications and connectivity options.

This wireless connectivity software suite includes three basic components essential to connectivity management, including:

1. Network Connection Analysis

This Connectivity Doctor identifies, analyzes and helps to resolve any network configuration issues that users may experience. This proactive tool not only informs the user of any connectivity issues but also guides the user through the trouble-shooting process. For example, the Doctor will even help users to find the switch for the wireless antenna, if need be. With this interactive and easy-to use tool, network connectivity is simple to manage.

2. Network Device Control

This tool helps users to switch among network devices, for example from wired to wireless connections, by enabling or disabling hardware features. Network Device Control simplifies communications.

3. Profile Setting and Switching

Profiles are easily created for various kinds of connectivity, depending on the user's point of connection (in the office, on the road or at home) and type of communications (wired or wireless). By enabling users to establish and switch easily among various profiles, users no longer need to spend time reconfiguring their notebooks, when on the move. With a click, users can be connected anywhere, anytime.

WIRELESS CONNECTIVITY: AS EASY AS 1-2-3

With these three utilities, wireless connectivity is as simple as 1-2-3.

In the past, users had to manually switch the network adapter settings via the Microsoft Control Panel and a Network Device Switch. In addition, the user had to make sure the Wireless Communications switch for the antenna was turned on and that the WLAN Client manager had the correct settings. Often, this entailed time-consuming changes to the IP configuration, particularly when the user moved from the office to the home.

Today, with ConfigFree™, wireless connectivity is simplified. With the easy-to-use graphical interface, the user can quickly identify both enabled and disabled devices, active and available profiles, and available network resources. Switching among profiles is as simple as clicking on the connection one wants to activate. Mobility management has never been so easy.

Mobile workers can easily manage network configuration from a single interface, including the following aspects:

- capturing profiles for various network configurations
- problem determination
- device management
- quick connectivity to wireless devices, such as a wireless printer or projector
- detecting and configuring access points for wireless communications
- switching among network profiles as the point-of-connection changes.

Disclaimer

Toshiba Singapore Pte Ltd makes no representations or claims, either expressed or implied, with respect to this PC Bulletin. Toshiba reserves the right to make changes in the specifications at any time without notice and without obligation of Toshiba Singapore Pte Ltd to notify any person of such changes. All information, statements, technical information, and recommendations in this bulletin are believed reliable, but the final accuracy of material is not guaranteed.

Should any problems arise, the Connectivity Doctor is there to provide assistance. For instance, if the Wireless Communications antenna is switched off by mistake, the user receives an instantaneous status update. This alert will even show the user where the switch is located on his or her Toshiba notebook.

All in all, by offering a single interface for wireless and wired networking connectivity, ConfigFree™ makes it easy for users to easily create and manage their own mobility configurations.

FEATURES AND BENEFITS OF CONFIGFREE™

In this chart, we summarize the features and benefits of ConfigFree™.

Features	Benefits
Network Analysis: easy to identify and resolve problems	Saves time and effort
Wi-Fi Status Indicator	Disable or enable wireless communications quickly and easily
Locate Access Point information easily (including WEP Key and ESSID information)	Connect quickly when entering new WLAN environments
Quick & Easy Toshiba Wireless LAN Projector connection with the Toshiba Projector Utility	Hassle-free presentations using wireless connectivity
Dial-up shortcuts	Connect quickly and easily from remote locations
Profile Switching	Switch easily for new environments or if there is a connectivity problem
Device refresh for IP address	Quickly resolve connectivity problems when the network configuration changes
Create a log file for any problem	Should a call to the HelpDesk be required, this information will make problem determination easier and faster. Resolve connectivity issues in the most efficient way possible

OVERALL BENEFITS FOR NOTEBOOK USERS AND COMPANIES

Overall, users benefit from enhanced productivity as they are spending less time and effort worrying about wireless and wired network configuration issues and more time simply enjoying the benefits of instant, easy network communications.

For companies, this means fewer resources are required to provide networking and HelpDesk support. This means that the Total Cost of Ownership (TCO) is reduced as less training is needed and fewer resources are required to provide network support. Finally, the Return on Investment (ROI) can be more rapidly achieved for notebook users with ConfigFree™ installed on their machines

Disclaimer

Toshiba Singapore Pte Ltd makes no representations or claims, either expressed or implied, with respect to this PC Bulletin. Toshiba reserves the right to make changes in the specifications at any time without notice and without obligation of Toshiba Singapore Pte Ltd to notify any person of such changes. All information, statements, technical information, and recommendations in this bulletin are believed reliable, but the final accuracy of material is not guaranteed.

FUTURE DEVELOPMENTS

In the future, Toshiba plans to enhance the software suite continuously to support emerging and alternative wireless technologies. Here are a few of the enhancements planned:

- Integration of additional utilities to support other wireless communications, including Bluetooth and GPRS
- Simple Share: this feature will allow users to quickly identify and access available network resources.
- Quick Connect: this utility will help the user to connect to new Toshiba Access Points, enabling the client to gain a secure connection quickly
- Easy Secure: this "WLAN wizard" will make it easy to set security to new or existing Toshiba Access Point devices
- Database format for easy customization
- Support for emerging WLAN standards

SUMMARY

With the introduction of ConfigFree™, Toshiba once again demonstrates its commitment to enabling "anywhere, anytime communications". For customers and companies alike, wireless connectivity is now easier and more intuitive. So, now you can spend less time configuring your wireless connections and more time simply communicating.

Disclaimer

Toshiba Singapore Pte Ltd makes no representations or claims, either expressed or implied, with respect to this PC Bulletin. Toshiba reserves the right to make changes in the specifications at any time without notice and without obligation of Toshiba Singapore Pte Ltd to notify any person of such changes. All information, statements, technical information, and recommendations in this bulletin are believed reliable, but the final accuracy of material is not guaranteed.

Copyright © Toshiba Singapore Pte Ltd 2004